



# LOGAN ARTISTS

ASSOCIATION INC.

## Newsletter April 2011

General Meetings are held the 1st Saturday of each Month excluding January.  
Next meeting is 2nd April 10am.

**Logan Artists  
Association Inc**  
PO Box 378  
Browns Plains  
QLD 4118

**Art & Pottery Studios**  
27 Coral St Loganlea

**ALL ENQUIRIES**  
Ph 0421 874 225

**President**  
Karin Hill

**Vice President**  
Sherry Austin

**Secretary**  
Vikki Kindermann

**Treasurer**  
Rob Tindale

**Patron**  
Desley Scott MP  
State Member  
for Woodridge

[www.loganartists.com](http://www.loganartists.com)  
[logan.artists@optusnet.com.au](mailto:logan.artists@optusnet.com.au)

[www.facebook.com/  
logan.artists.com](http://www.facebook.com/logan.artists.com)

*"A place for all Artists"*



**Art  
+  
Friendship**

### President's Message...

I know that we agree with the song "What a difference a day makes..." and we can truly appreciate the difference that five years can make! In 1996 Logan Artists Association was given council approval to move into 27 Coral St Loganlea. Loganlea Progress Hall was abandoned and vandalised. It has been lovingly embraced by the Logan Artists who have developed the space into a useful and practical art studio. The pottery studio has grown from just a roof beside two storage sheds which later became the kiln sheds. A more detailed story is in this newsletter.



Over the intervening five years, significant improvements have been due to the contribution of energetic optimistic members, successful grant applications, a community renewal project, ongoing support by Logan City Council, Mayor Pam Parker and Cr Graham Able, and a lot of hard work by members and friends.

The Logan Artists Art and Pottery Studios is now an active community centre for a wide range of creative arts and crafts, in keeping with the LAA slogan "A place for all artists".

Please join us in celebrating our five year anniversary at Coral St during our Members Meeting on 2nd April and share special time with us. We will also be welcoming visitors from Redland Yurara Art Society who will be telling of their activities and events and sharing a light lunch with us.

*Karin*

Final thought: *Art washes from the soul the dust of everyday life.* Pablo Picasso



# Art shed

## BRISBANE

*inspiring creativity®*

Under new management since 2007

- THE MOST COMPREHENSIVE RANGE of fine art supplies (including Art Spectrum, Chroma, Winsor & Newton, Schmincke, Canson, Staedtler, Artline, Faber-Castell, Micador, Fredrix, Derwent, Conte, Carravaggio, Weber, Caran D'Ache)
- The biggest range of Mont Marte products in Queensland
- A reputation for having the FAIREST PRICES
- A loyalty programme with achievable rewards
- Extra discounts for art educators, artworkers alliance and flying arts members
- Unique ART KITCHEN, a no obligation materials testing area.
- Artist drop-in centre, with artists working in store - FREE
- Regular FREE ART DEMOS
- ART BOOKSHOP in store and online.
- Custom CANVAS STRETCHING service
- Circle Gallery above



274 Montague Road West End, Q 4101  
 Ph: (07) 38461330  
 Fax (07) 38463330  
 Email: westend@artshed.com.au



[www.artshedbrisbane.com.au](http://www.artshedbrisbane.com.au)

**10% Discount for Logan Artists  
 Members at The Art Shed**

## CHILDREN'S AFTER-SCHOOL ART CLASSES

Wednesday 3.30pm to 5.30pm  
 at the Logan Artists Association Art Studio

**Experienced qualified tutor  
 Fun safe environment**

Children over 8 years welcome  
 Bookings essential phone Rob 0421 874 225

## From The Art Studio

Hi everyone,

Another month has slipped by and I'm still chasing myself going backwards.

**Children's After-School Classes** have started. The children attending the classes are really enjoying it but we need more students to make it a viable class size. We hope things improve in April or we may have to suspend this option.

Are you interested in our new half day workshop "**Altered Pages**" with Vikki where we will remove pages from old discarded books and find fun creative artistic uses for them? This is scheduled for Saturday 16 April 9:30 – 12:30. Vikki will be bringing some examples to the April members meeting so be sure to check them out. It will be a relaxing fun workshop.



We are also planning a class working with "**Scratchboards**" - we have enough students for the class and are waiting to finalize a date that suits the Tutor.

We are also looking for people interested in other art forms including

**Lino cutting prints** - How to cut printing mats and then produce prints

**Heliotropic** (sun sensitive) painting - a fun opportunity to work with this paint which reacts with sunlight to give wonderful results – all you need is a couple of canvases and found items of any description which will make nice patterns.



**How to Draw Perspective** - One Day Workshop to learn all the tricks of perspective in your drawing and painting.

If you are interested in these classes, please email me on [retsmob@optusnet.com.au](mailto:retsmob@optusnet.com.au). When we have sufficient numbers for a workshop, we will plan them into our events calendar.

Looking forward to our Birthday celebrations at the April meeting – Happy 5th Birthday to all

Rob T

# Loganlea Progress Hall

*Also known as*

## Logan Artists Art & Pottery Studios

It is interesting to know the historical story of things we value – it provides another level of appreciation. I was fortunate to receive this history of the Loganlea Progress Hall from Cr Graham Able and thought it appropriate for the newsletter celebrating LAA development of the space during the past five years.

The Loganlea Progress Association was formed in the 1950s. In 1961 a parcel of just over 6 ½ acres was acquired at 27 Coral Street. The organisation was politically active through to the 1980s with up to 150 members. The Progress Association raised the funds to build a hall, which was constructed in the '60s on the low lying part of the land but this was inundated in the 1974 flood, and later burnt out by vandals. Further fundraising occurred to procure a new building, and eventually an unwanted building from Woodridge State School (originally from Cannon Hill State School) was relocated to the site in 1984 at a cost of \$250.

The committee struggled to comply with Logan City Council's building requirements. They were caught in a bind of needing regular rentals to generate revenue, while costs of repairs and maintenance was outstripping income. President Peter Neilsen made a plea through the local newspapers for assistance, but the following year they sought Council support to establish the hall as a Community Centre, which occurred in 1988.

In 1990 the Progress Association sought council permission to extend the hours on Saturday nights so the hall could be let for private functions. Although neighbours objected to evening functions because of noise levels, the Council agreed to extend the hours till midnight on Saturday provided noise was kept within defined levels. Spiralling insurance costs led to the Association disbanding in 2002. Outstanding property rates led to the Council's acquisition of the property in August 2004.

In March 2005, Council called for expressions of interest in the property and received four proposals. Logan Art Gallery's submission was accepted as a partnership with Logan Artists Association for the development of a community artist's studio and workshop. Since that time, the development of the facilities has continued with the following highlights:

## 2006

- Official Signing and key ceremony 4th March 2006
- Logan Artists Association signs installed (funded by Cr Pam Parker)



- First RADF Workshops held in our own premises in art studio and "under tarps" pottery studio

## 2007

- Gambling Community Benefit Fund grant to purchase kiln for pottery studio, and Construction to enclose pottery studio, erect clay storage shed, 3 Phase power,



- Commenced "Beginners Art Classes"

## 2008

- Jupiters Casino Gambling Benefit Fund to repaint exterior of Art Studio



- Water Tanks and pumps installed (Lifestyle Waterwise Grant)



- Community Renewal Project with Boystown repaired weather damaged veranda, new back stairs, fresh paint, upgraded and external paint for toilet block, constructed the concrete patio in front of the pottery studio, pathways and BBQ eating area in the garden
- Logan City Council Funding for Awning to Pottery Studio



- Grants from VSEG, Councillors for Computer, Fridge, Slab Roller, Extruder, Signage for Studios, Whirly Birds, Pottery Wheels, Shelving, Fire Blankets, Vacuum Cleaner, Projector, Urn, Laptop and Pug Mill

## 2009

- VSEG Funding & Lady Mayoress Grant for Television, Projector, Printer, Wall Urn and new Curtains for Art studio



- Construction and naming of Jude's Shed, now the framing shed



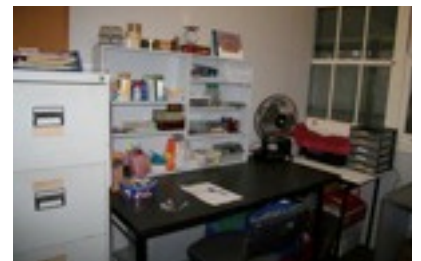
- RADF grant for construction of totem pole project led by Sherry



- Cr Graham Able funded purchase of new chairs and chair trolley for art studio
- Award winning native garden established by volunteer gardener Nick

## 2010

- Cr Graham Able funded construction of new office space and storage room



- Cr Graham Able later funded the new fence and gate





- Further beautification of toilet block with Geoff painting interior concrete block walls and installation of two fantastic paintings by art tutor Brian Cook.

## 2011

- Cr Graham Able funded concrete driveway and parking area

All these fantastic changes are the direct result of the dedicated hard work of the president, committees, members, friends and tutors during the five years.

Thank you for your massive contribution.

*Karin Hill*



Art  
+  
Friendship



www.loganartists.com  
Ph 0421 874 225

Logan Artists Art & Pottery Studio  
celebrating 5 years  
at 27 Coral St Loganlea - 2011



## Public Art Project at the new Logan Central Library

"I haven't read that book" was one of the many funny comments we heard as we worked on the last stage of the lift section of the art project. It all began back in September 2010 when I was selected as one of the artists to create several public art pieces using old books to enhance the new Logan Central Library.

The artists on the team were Sue Prenzler (Reference Librarian, Logan Central Library), Judy Constable and Peter Penwarn (casual Logan Art Gallery Assistants) and myself (Library Assistant, Technical Services). I have no formal art studies but lots of time spent dabbling in all sorts of art, and I was delighted to be involved. The project also has had significant help and direction of Annette Turner (Cultural Services Program Leader, Logan Art Gallery) and Luis Nheu (Internal Architect) who had created many public art pieces before. Other people also helped along the way and we really appreciated their help.



Approx 15,000 books were collected from the library's discards and publically donated books. After several frustrating delays, we finally gained access to the building in late January with only two weeks to complete the entire project – building three columns of books in the library, and a "skin" of books for the front of the circulation desk and the huge area surrounding the foyer lift.

When the boxes of collected books arrived and kept arriving and kept arriving we thought we'd drown before we started! Sorting the books into sizes and colours seemed to take ages. Then we created a pattern in blocks with 4-5 books in each block, securing them with liquid nails, silicone and 4" screws. It was very physical work - my last blister has now healed and my fingernails have finally grown back!



In the building foyer, we created a block pattern in graduating colour. The blocks were glued on MDF board, and with the help of two very strong cabinet-makers



and a scissor-lift the whole thing was screwed onto the concrete blocks.

We had times when we forgot to leave room for screws and a whole lot of ripping and tearing happened... Times when we were so tired and sore that we could hardly speak, but we knew we all felt the same... Times when our knees were so sore from kneeling on tiles, we used towels, rags and bubble-wrap as cushions to make it easier. We shared best remedies for aching backs and knees and I actually took a bath after one very long day and I'm a shower person – I hate having a bath!

At the very end of the project in mid-February, we each received an unexpected presentation from the Manager – a book voucher from QBD!

Even though it was such an exhausting project, I'm really glad I had the opportunity to be part of it. When it comes to art, I've mostly worked on my own and it's entirely different to work in a team, to share and visualise together. This was probably the most enjoyable and rewarding part of the entire project, and every time I walk through the library, I feel really proud that we created something you just can't miss!

*Greer Roberts*

## Product of the Month from The Art Shed

### Body Art" by Mont Marte.

This cosmetic grade face and body paint comes in 14 gorgeous colours. It is safe, easy to apply with brushes or sponges and is comfortable to wear for many hours.



Finally, a great body art product at a realistic price! \$3.50 each.

To see a body art demo visit <http://www.artshedbrisbane.com.au/events-from-the-hub.html>

## Flood Relief for Artists



Local Artists members and friends generously donated art supplies including paints, brushes, pastels and canvases, extending a helping hand to West End Community House Art Group who lost their art equipment during the recent floods. Deb Wright, facilitator for the West End group said "It was very distressing for all of us when the flood took away or damaged all their art equipment. It is truly heart-warming to have artists supporting other artists, and we are very grateful for any material or equipment donated." Donations are still being accepted at the LAA Art Studio.



### Thumbs Up

**Thumbs up** and sincere appreciation to Cr Graham Able who funded the new concrete driveway and parking spaces. The project costs \$40,000+ and LAA members and friends will be able to park in comfort for many years to come... thank you.



**Thumbs up** to the members who turned up for the working bee on Friday, working hard and making significant improvements to both the pottery studio and the art studio ... We have a fantastic space, made all the better for regular cleanups and working bees ... thank you

## Pottery Fun on Saturday

Although only a few were able to come for the pottery day on Saturday 26th, we had a great deal of fun and relaxation creating various items ready for the raku firing in June – mushrooms, owls, a fat hen and her fat husband, schools of penguins, mushrooms, a bum sculpture and Sherry's whatchamacallits. If you want to create something for the raku, it has to be ready for the bisque firing on 22 May, see Sandra if you want to purchase clay. Created items ready for the Raku firing can be purchased either from Sandra or Sherry, or from Jimboomba Potters on the day. The Raku firing will be a great fun day so make sure it is marked in your diaries for 18 June



## From Debaran's Easel of knowledge

**RED** is the colour of fire and blood, so it is associated with energy, war, danger, strength, power, determination as well as passion, desire, and love.

Red is a very emotionally intense colour. It enhances human metabolism, increases respiration rate, and raises blood pressure. It has very high visibility, which is why stop signs, stoplights, and fire equipment are usually painted red. In heraldry, red is used to indicate courage. It is a colour found in many national flags.

Red brings text and images to the foreground. Use it as an accent colour to stimulate people to make quick decisions; it is a perfect colour for 'Buy Now' or 'Click Here' buttons on Internet banners and websites. In advertising, red is often used to evoke erotic feelings (red lips, red nails, red-light districts, 'Lady in Red', etc). Red is widely used to indicate danger (high voltage signs, traffic lights). This colour is also commonly associated with energy, so you can use it when promoting energy drinks, games, cars, items related to sports and high physical activity.

Light red represents joy, sexuality, passion, sensitivity, and love.

Pink red signifies romance, love, and friendship. It denotes feminine qualities and passiveness.

Dark red is associated with vigor, willpower, rage, anger, leadership, courage, longing, malice, and wrath.

Brown red suggests stability and denotes masculine qualities. It is associated with harvest and fall.



# ALTERED BOOK CLASS

Join Vikki in the increasingly popular art of Altered Books.

Bring along an old book that you can paint, tear, collage, sew, stamp, draw as well as lots more interesting techniques.

The great part is, the pages don't start out blank so you have something to build on, its less intimidating and loads of fun. A bit playful and naughty - weren't we always told as kids never write/draw in books. Well now you can!

Come and deconstruct and change

- Alter someone else's work.

**Time:** 9.30am - 12.30pm

**Date:** Sat April 16th

**Cost:** \$20 members or \$25 non-members

**Ph:** 0421 874 225

**Location:** Logan Artists Studio



## BEENLEIGH FRAMING + ART SUPPLIES

4/89 Boundary Street Beenleigh  
Ph 3807 1058

Large range of Art Supplies

Custom Framing

Art Classes

- Watercolour
- Acrylic
- Oil Painting
- Pastel
- Graphite
- Life Drawing

Now stocking  
Mont Marte Range



**10% Discount for LAA Members  
& 25% off Art Stock**

# ART CLASSES

Watercolour, Oils & Acrylics

Monday, Wednesday & Thursday:  
9am – midday

Tuesday night: 6pm – 9pm

Children –

Tuesday 3:30pm – 5:30pm

Jan Honey  
Art Design  
Studio

35 years Art Experience  
Edens Landing

Phone: 0406 630 621



## Pottery Classes



**Date:** from 28th March Mondays & Wednesdays

**Time:** 9.30am - 12.30pm

**Cost:** \$20 each class for 6 weeks total \$120 - plus materials & firing

**Location:** Logan Artists Pottery Studio

New pottery classes are being offered on Mondays and Wednesdays during the day for experienced and beginner potters.

The class will cover aspects of both wheel throwing and hand building. Clay selection, clay preparation (wedging & kneading) workability and plasticity.

Wheel Throwing: This area will cover Centering, forming a cylinder and then the principles of form and shape.

Hand building will involve clay selection, plasticity, and slab construction. Slabs will be produced both on the slab roller, cut and by hand. Techniques for the strong joining of clay elements, also how to make clay coils and cylinders.

Hope to see you there. For further info please phone 0418673404

Ray Outteridge.

## LAA Confirming Workshop With Kate French

Kate is well-known sculpture, painter and teacher from Mt Tamborine. We visited Kate during our LAA tour of the Mt Tamborine open studios and since then we have wanted to organise a special workshop with her. She is an amazing sculptor, both of traditional busts and quirky characters. The following excerpt is from Kate's website:

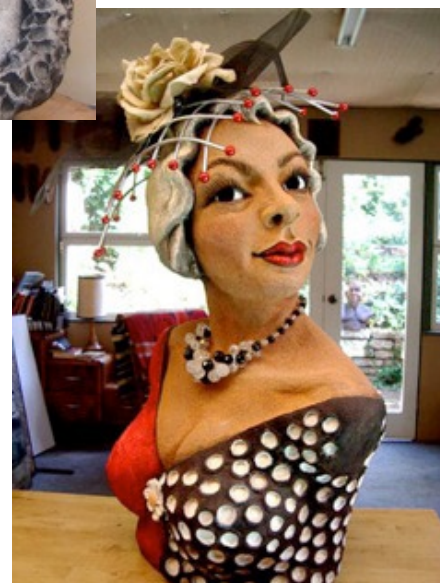
The wonderful and varied characters who have come from all over the country and the world to make this place their home have been a perpetual source of inspiration. They have fuelled my fascination with people. Human emotions and quirks of personality, the huge diversity in our physical characteristics and, in particular, the way the human face can both mask and expose the story which lies beneath, are the things I seek to capture. The face is a marvel of nature.

The first medium I was drawn to was clay ceramics, focusing on figurative and portrait sculpture. Over the years, the older female has become the main subject of my sculptural practice. I love to tell a story about these archetypal characters who birth themselves in my studio. These works, inevitably, are not beautiful, in the traditional sense, but all of them celebrate what it means to be human, to be alive. The figurative sculpture you see on this website is largely a result of the quest for true beauty in our perfection hungry imperfect world.

Proposed LAA Workshop: Four days– Sat & Sun 9&10 July + Sat & Sun 16&17 July

Class size strictly limited. We are applying for RADF funding to subsidise the costs, so fees are not yet finalised but may be only approx \$200 + clay. Fees will be confirmed asap.

If you are interested in attending this special workshop, please phone Rob Tindale on 0421 874 225. (Since this is a special workshop, places will only be confirmed when full payment is received.)



# LOGAN ARTISTS – ART & POTTERY STUDIO PLANNER

*\* All activities may be subject to change - Please confirm details with Workshop Coordinator 0421 874 225*

	Monday	Tuesday	Wednesday	Thursday	Friday	Saturday	Sunday
	<b>28</b> Oils with Brian [9am – 12noon] <b>Pottery with Ray</b> [9:30-12:30]	<b>29</b> Social Art Group [9:30am – 2:30]	<b>30</b> Art Class with Deb [9:30–12:30] <b>Pottery with Ray</b> [9:30-12:30] <b>Children's Art Class</b> [3:30-5:30pm]	<b>31</b> Art Class with Suzanne [9:30-12:30]  Evening Art Class with Terry [6pm-8pm]	<b>1</b>  Pastel & Acrylic Class with Mako [9:30-12:30]	<b>2</b>  <b>MEMBERS MEETING with Yurara</b> [10 – 12]	<b>3</b>
<b>APRIL 2011</b>	<b>4</b>  <b>Pottery with Ray</b> [9:30-12:30]	<b>5</b> Social Art Group [9:30am – 2:30]	<b>6</b> Art Class with Deb [9:30–12:30] <b>Pottery with Ray</b> [9:30-12:30] <b>Children's Art Class</b> [3:30-5:30pm]	<b>7</b> Art Class with Suzanne [9:30-12:30]	<b>8</b>  Pastel & Acrylic Class with Mako [9:30-12:30]	<b>9</b>	<b>10</b>
	<b>11</b> Oils with Brian [9am – 12noon] <b>Pottery with Ray</b> [9:30-12:30]	<b>12</b> Social Art Group [9:30am – 2:30]	<b>13</b> Art Class with Deb [9:30–12:30] <b>Pottery with Ray</b> [9:30-12:30] <b>Children's Art Class</b> [3:30-5:30pm]	<b>14</b> Art Class with Suzanne [9:30-12:30]  Evening Art Class with Terry [6pm-8pm]	<b>15</b>  Pastel & Acrylic Class with Mako [9:30-12:30]	<b>16</b>  <b>Altered Pages Workshop with Vikki</b> [9:30 – 12:30]	<b>17</b>
	<b>18</b> Oils with Brian [9am – 12noon] <b>Pottery with Ray</b> [9:30-12:30]	<b>19</b> Social Art Group [9:30am – 2:30]	<b>20</b> Art Class with Deb [9:30–12:30] <b>Pottery with Ray</b> [9:30-12:30] <b>Children's Art Class</b> [3:30-5:30pm]	<b>21</b> Art Class with Suzanne [9:30-12:30]	<b>22</b> <b>EASTER</b>	<b>23</b> <b>EASTER</b>	<b>24</b> <b>EASTER</b>
	<b>25</b> <b>ANZAC DAY</b>	<b>26</b> <b>EASTER</b>	<b>27</b> Art Class with Deb [9:30–12:30] <b>Pottery with Ray</b> [9:30-12:30] <b>Children's Art Class</b> [3:30-5:30pm]	<b>28</b> Art Class with Suzanne [9:30-12:30]  Evening Art Class with Terry [6pm-8pm]	<b>29</b>  Pastel & Acrylic Class with Mako [9:30-12:30]	<b>30</b>	<b>1</b>
<b>MAY 2011</b>	<b>2</b> <b>LABOUR DAY</b>	<b>3</b> Social Art Group [9:30am – 2pm]	<b>4</b> Art Class with Deb [9:30–12:30] <b>Pottery with Ray</b> [9:30-12:30] <b>Children's Art Class</b> [3:30-5:30pm]	<b>5</b> Art Class with Suzanne [9:30-12:30]	<b>6</b>  Pastel & Acrylic Class with Mako [9:30-12:30]	<b>7</b>  <b>MEMBERS MEETING [10 – 12]</b>	<b>8</b>  <b>MOTHERS DAY</b>
	<b>9</b> Oils with Brian [9am – 12noon] <b>Pottery with Ray</b> [9:30-12:30]	<b>10</b> Social Art Group [9:30am – 2pm]	<b>11</b> Art Class with Deb [9:30–12:30] <b>Pottery with Ray</b> [9:30-12:30] <b>Children's Art Class</b> [3:30-5:30pm]	<b>12</b> Art Class with Suzanne [9:30-12:30]  Evening Art Class with Terry [6pm-8pm]	<b>13</b>  Pastel & Acrylic Class with Mako [9:30-12:30]	<b>14</b>  <b>Portrait Workshop with Mako</b> 9.30am – 3.30pm	<b>15</b>
	<b>16</b>  <b>Pottery with Ray</b> [9:30-12:30]	<b>17</b> Social Art Group [9:30am – 2pm]	<b>18</b> Art Class with Deb [9:30–12:30] <b>Pottery with Ray</b> [9:30-12:30] <b>Children's Art Class</b> [3:30-5:30pm]	<b>19</b> Art Class with Suzanne [9:30-12:30]	<b>20</b>  Pastel & Acrylic Class with Mako [9:30-12:30]	<b>21</b>	<b>22</b>  <b>Pottery Firing Day for Raku Day</b>
	<b>23</b> Oils with Brian [9am – 12noon] <b>Pottery with Ray</b> [9:30-12:30]	<b>24</b> Social Art Group [9:30am – 2pm]	<b>25</b> Art Class with Deb [9:30–12:30] <b>Pottery with Ray</b> [9:30-12:30] <b>Children's Art Class</b> [3:30-5:30pm]	<b>26</b> Art Class with Suzanne [9:30-12:30]  Evening Art Class with Terry [6pm-8pm]	<b>27</b>  Pastel & Acrylic Class with Mako [9:30-12:30]	<b>28</b>	<b>29</b>
	<b>30</b>  <b>Pottery with Ray</b> [9:30-12:30]	<b>31</b> Social Art Group [9:30am – 2pm]	<b>1</b> Art Class with Deb [9:30–12:30] <b>Pottery with Ray</b> [9:30-12:30] <b>Children's Art Class</b> [3:30-5:30pm]	<b>2</b> Art Class with Suzanne [9:30-12:30]	<b>3</b>  Pastel & Acrylic Class with Mako [9:30-12:30]	<b>4</b>  <b>MEMBERS MEETING [10 – 12]</b>	<b>5</b>
<b>JUNE 2011</b>	<b>6</b> Oils with Brian [9am – 12noon] <b>Pottery with Ray</b> [9:30-12:30]	<b>7</b> Social Art Group [9:30am – 2pm]	<b>8</b> Art Class with Deb [9:30–12:30] <b>Pottery with Ray</b> [9:30-12:30] <b>Children's Art Class</b> [3:30-5:30pm]	<b>9</b> Art Class with Suzanne [9:30-12:30]  Evening Art Class with Terry [6pm-8pm]	<b>10</b>  Pastel & Acrylic Class with Mako [9:30-12:30]	<b>11</b>  <b>Glass fusing workshop</b>	<b>12</b>
	<b>13</b>  <b>Queen's Birthday</b>	<b>14</b> Social Art Group [9:30am – 2pm]	<b>15</b> Art Class with Deb [9:30–12:30] <b>Pottery with Ray</b> [9:30-12:30] <b>Children's Art Class</b> [3:30-5:30pm]	<b>16</b> Art Class with Suzanne [9:30-12:30]	<b>17</b>  Pastel & Acrylic Class with Mako [9:30-12:30]	<b>18</b>  <b>Raku firing day with Jimboomba Potters</b>	<b>19</b>
	<b>20</b> Oils with Brian [9am – 12noon] <b>Pottery with Ray</b> [9:30-12:30]	<b>21</b> Social Art Group [9:30am – 2pm]	<b>22</b> Art Class with Deb [9:30–12:30] <b>Pottery with Ray</b> [9:30-12:30] <b>Children's Art Class</b> [3:30-5:30pm]	<b>23</b> Art Class with Suzanne [9:30-12:30]  Evening Art Class with Terry [6pm-8pm]	<b>24</b>  Pastel & Acrylic Class with Mako [9:30-12:30]	<b>25</b>	<b>26</b>